

04 වසර

ඉංග්‍රීසි

ඒකක පරීක්ෂණ

අංක 04



A3book.com



01. Name following buildings.



- a. bookshop b. hospital c. bank
d. post office e. library



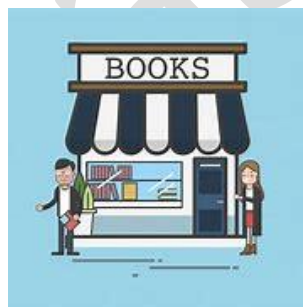
- a. bookshop b. hospital c. bank
d. post office e. library



- a. bookshop b. hospital c. bank
d. post office e. library



- a. bookshop b. hospital c. bank
d. post office e. library



- a. bookshop b. hospital c. bank
d. post office e. library

(2) Complete the sentences with correct word.

How to turn the television on

1) First the power button.

- a. Adjust
- b. press
- c. increase
- d. watch
- e. select

2) Secondlythe channel by pressing 5.

- a. Adjust
- b. press
- c. increase
- d. watch
- e. select

3) Thirdly the volume.

- a. Adjust
- b. press
- c. increase
- d. watch
- e. select

4) Then the antenna.

- a. Adjust
- b. press
- c. increase
- d. watch
- e. select

5) Finally let's the film.

- a. Adjust
- b. press
- c. increase
- d. watch
- e. select

a3book.com

04 වසර

ඉංග්‍රීසි

ඒකක පරීක්ෂණ

අංක 04

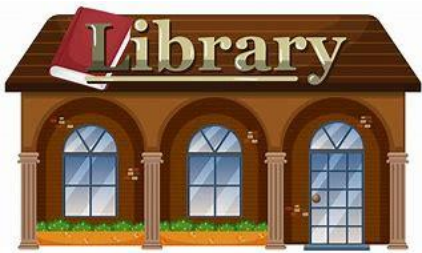
පිළිතුරු



A3book.com



01. Name following buildings.



- a. bookshop b. hospital c. bank
d. post office e. library



- a. bookshop b. hospital c. bank
d. post office e. library



- a. bookshop b. hospital c. bank
d. post office e. library



- a. bookshop b. hospital c. bank
d. post office e. library



- a. bookshop b. hospital c. bank
d. post office e. library

(2) Complete the sentences with correct word.

How to turn the television on

1) First the power button.

- a. Adjust
- b. press
- c. increase
- d. watch
- e. select

2) Secondlythe channel by pressing 5.

- a. Adjust
- b. press
- c. increase
- d. watch
- e. select

3) Thirdly the volume.

- a. Adjust
- b. press
- c. increase
- d. watch
- e. select

4) Then the antenna.

- a. Adjust
- b. press
- c. increase
- d. watch
- e. select

5) Finally let's the film.

- a. Adjust
- b. press
- c. increase
- d. watch
- e. select